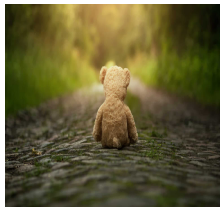


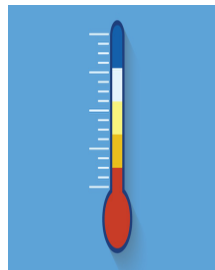
Coronavirus (COVID-19) Visitor Protocol



We want to keep people safe and well. To help protect everyone, visitors will only be able to enter this building if some steps are taken.



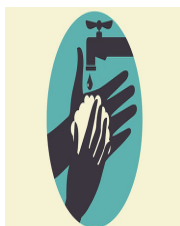
Before a visit, staff will check whether you (or someone you live with) that are self-isolating. If you or they are then your visitor cannot come yet



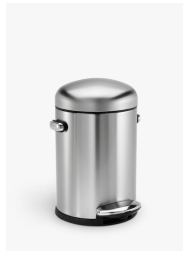
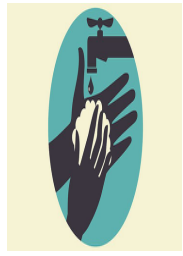
If you are ok, we will check that the person who wants to visit is not showing any symptoms of Coronavirus. The symptoms are a new, continuous cough and or high temperature. **If they have these symptoms then your visitor cannot come yet**



If your visitor gets the go-ahead to come to your building, they will have to follow any guidance given by staff



wash their hands often, for at least 20 seconds, with soap and hot water or hand sanitiser



cover their mouth and nose with a tissue or sleeve (not hands) if they cough or sneeze. Put used tissues in the bin immediately and wash their hands



Keep at least 2 metres (6 feet) away from anyone else in the building



Go straight to the place where you are meeting them, away from other people. As few people as possible should visit, and they should only stay for a short time



Thank you for helping to keep people safe!